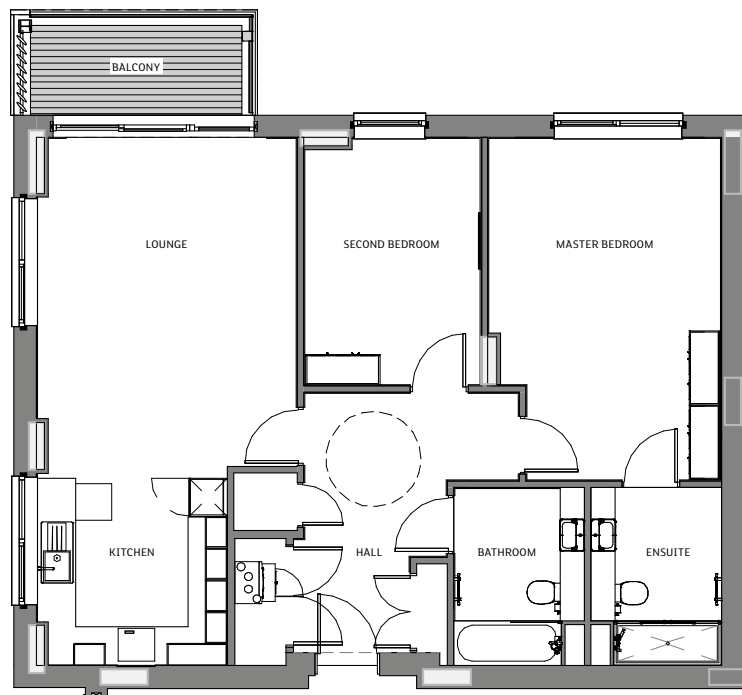


LITTLETON

TWO BEDROOM APARTMENT



Apartments will include fitted kitchens and fitted wardrobes to the master bedroom. The homes are sold unfurnished.

	Metres	Feet
Kitchen	3.01m x 3.13m	9'9" x 10'3"
Lounge	4.11m x 5.18m	13'5" x 17'0"
Master Bedroom*	5.38m x 3.68m	17'6" x 12'1"
Second Bedroom	4.80m x 2.80m	15'7" x 9'1"
Total Area	89 sq m	960 sq ft

* including wardrobes

Any sizes and dimensions provided are for indicative guidance purposes only and are not intended to be used for items of furniture. Bathroom, kitchen and wardrobe layouts are indicative only and are subject to change. Apartment areas are provided as gross internal areas and may vary.