

Autumn 2023

# Life on the Green

## Photo Finish

Capture and create  
with Vic and the  
Photographic  
group

## Walking in a Wiltshire Wonderland

Explore the canal and  
countryside with the  
Wadswick Walkers

## Moments in Time

First hand stories  
of great historical  
moments

# Good Education

An inspiring story of how  
two Wadswick residents brought  
education to people around the globe

WADSWICK GREEN  
CORSHAM

RANGFORD VILLAGES

# GROUPS & ACTIVITIES AT WADSWICK GREEN

<b>Art Group</b> <i>Contact Kathie Jennings or June Game</i>	1st and 3rd Thursday of the month at 10am	VH
<b>Croquet</b> <i>Contact Graham Wilkins</i>	Wednesdays at 10am	VG
<b>Boules</b>	Thursdays at 3pm	VG
<b>Musical Memories</b> <i>Contact Moyra Evans</i>	4th Tuesday of the month at 7pm	VH
<b>Photographic Group</b> <i>Contact Vic Steadman</i>	4th Thursday of the month at 10.30am	VH
<b>Play Reading</b> <i>Contact Moyra Evans</i>	2nd Tuesday of the month at 7pm	VH
<b>Prayer Group</b> <i>Contact Norman Fuggle</i>	Mondays at 10am	VH
<b>Reading Group</b> <i>Contact Christine Carter</i>	1st Tuesday of the month at 7pm	VH
<b>Reading Group</b> <i>Contact Hilary Flack</i>	2nd Friday of the month at 4.30pm	VH
<b>Scrabble</b>	Mondays and Tuesdays at 2pm	GH
<b>Sunday Hour</b> <i>Contact Pat Fuggle</i>	Sundays at 5pm	VH
<b>Table Tennis</b>	Sundays at 11am & Wednesdays at 6pm	VH
<b>Walking Group</b> <i>Contact Malcolm Jennings</i>	Fridays at 10am from The Greenhouse	GH
<b>Knit, Natter &amp; Crochet</b>	First Tuesday of the month at 10.30am	GH
<b>Tai Chi Qigong</b>	Mondays at 3pm and Fridays at 3pm	VH
<b>Low Impact Aerobics</b>	Tuesdays at 2pm	VH
<b>Zumba Gold</b>	Wednesdays at 2.45pm	VH
<b>Seated Pilates</b>	Thursdays at 2.30pm	VH
<b>Water Aerobics</b>	Wednesdays at 2pm	P

GH GREENHOUSE P POOL VG VILLAGE GREEN VH VILLAGE



## Welcome to the Autumn issue...



The Wadswick Green community has once again helped to produce an issue of Life On The Green full of variety and interest. Thank you as always to everyone who has contributed, and apologies to anyone whose comments weren't included due to lack of space.

In this issue our contributors tell us about some of the lovely places to visit locally, which might be just what you need to start exploring if you're new to the area. You can read about the trees that our courtyards are named after, and what different types of wood are used for. The photographic group like to explore all aspects of photography, try new techniques and learn from each other, whatever their skill level, and share some of their photographs in these pages. We also have a selection of favourite radio programmes to read about.

We'll also discover how Sebert and Doreen Lane improved education systems in poorer parts of the world, particularly in the Dominican Republic. Other residents share happy memories of The Beatles, Concorde, the 1966 World Cup, and sadly, some tragic moments in recent history.

And finally, read about Christa Rimington's life in Singapore, and meet some of our newest residents.

*Louise*

# Places to Visit near Wadswick

**There are some fantastic places to visit within the local area. Some of our Wadswick residents share details of local places they've enjoyed visiting**

**Bowood Woodland Gardens, Devizes Road, Calne SN11 9PG**

*From Maureen and Keith Watson*

The gardens are only open from April to June and cover about 30 acres of landscaped gardens. When the bluebells, azaleas and rhododendrons are in full bloom there is nowhere more beautiful. It is quite hilly and there are toilets and an outdoor cafe available and it is open from 10am. It is well worth a visit.



**Great Chalfield Manor, Melksham SN12 8NH**

*From Carol Edgar*

This delightful small National Trust property between Wadswick and Melksham is highly recommended. Some of us went there earlier this year to a Charity Garden Party. We enjoyed a tour round the house, walking through the Rose Garden and sitting under the shade of the trees with a view of the Church with an unusual Bell Tower built on to the end of the building. Open from 11am on Tuesday-Thursday and Sunday afternoons.

**The Courts Garden Holt, Bradford on Avon BA14 6RR**

*From June Game*

The Courts has been a National Trust property since 1942. It is set in an English country garden full of beautiful flowers, shrubs, trees and lily ponds, especially spectacular at tulip time. Not too large and mainly flat for ease of walking and always a joy to wander around. See the National Trust website for more details.



**Dyrham Park, Dyrham, near Bath SN14 8HY**

*From Moyra Evans*

Dyrham Park is close to Bath and can be found at a turning off the A46 before you get to the M4 junction. There's plenty of parking space, a welcome area and toilets before you make your way down through the park either on foot or in the Dyrham bus. On arrival at the lower level there is a cafeteria, a shop, more toilets and a lovely extensive level garden. The Parkland and Garden is open from 10am and the tearoom from 10.30am. Dyrham Park is a National Trust property.

**Somerset Lavender Fields BA3 5WA**

*From Joan Thake*

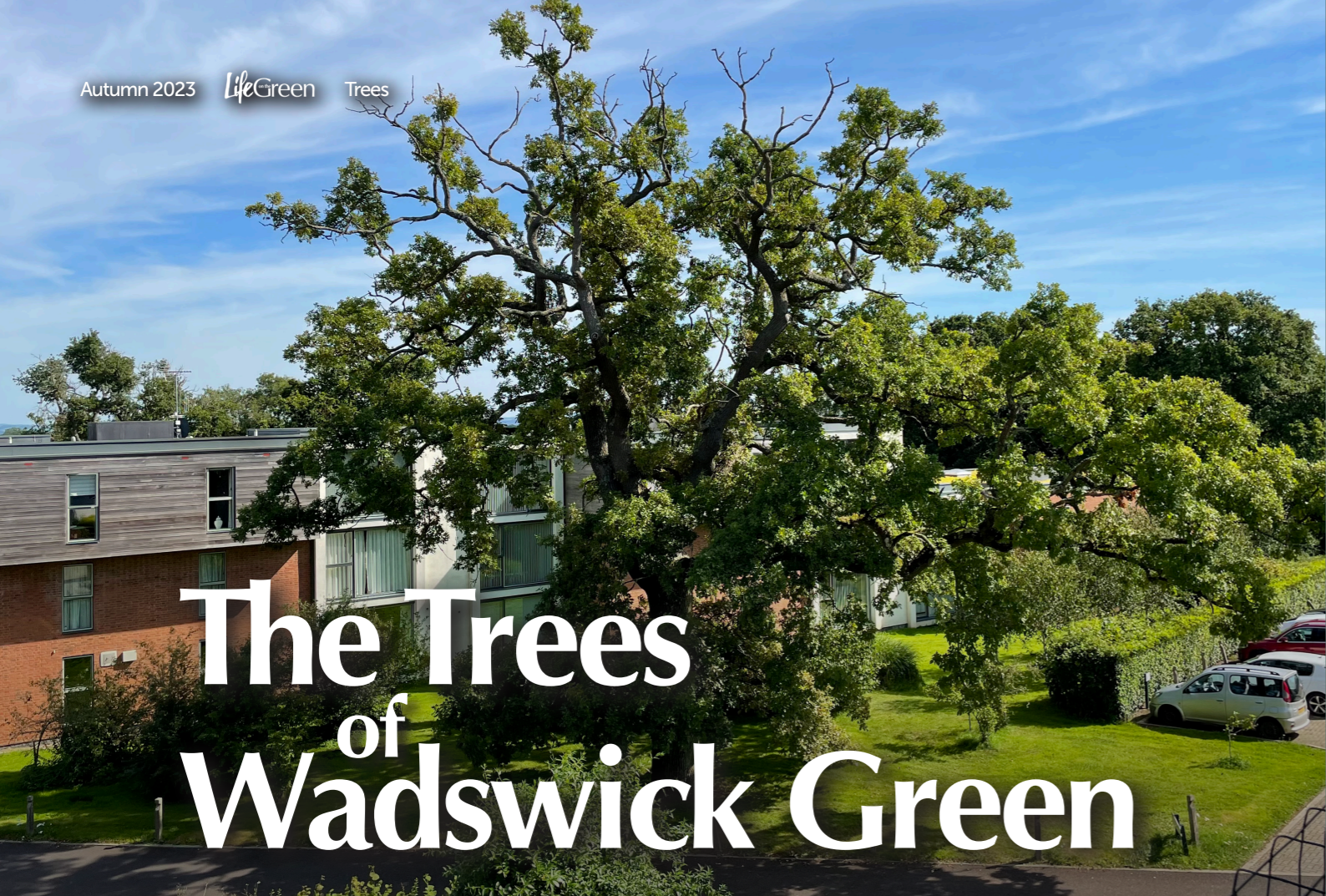
This is a small, family farm that lies within the village of Faulkland in Somerset, just a short journey of thirty minutes from Wadswick Green. The farm grows many varieties of lavender, using traditional techniques to harvest, distil, and dry lavender flowers, producing a wide range of fragrant, handmade lavender goods. There is also a flower and vegetable garden, plant nursery, farm shop, and cafe where you can browse and enjoy a delicious piece of lavender shortbread. Open from May - September, Wednesday - Sunday 10am - 5pm.

**Hartham Park, Corsham SN13 0RP**

*From Steve and Catherine Puleston*

There are open spaces for gentle walks and a moderately sized lake with ducks and geese. Best of all there is a lovely cafe called The Sweet Pea for coffee, cakes and light lunches.





# The Trees of Wadswick Green

*How much do you know about trees?*  
Judith Webb tells us about the trees that grow in our village.

The need to know where we are and how others can reach us, is inbuilt in us. Early settlers used land features such as rivers, lakes, trees, rocky outcrops, swamps and caves as way markers and gave them names to describe their surroundings. Even today our streets and houses can have similar descriptions. We have lived in houses with connections to cherry, wren, high bank, sandalwood and sorrel and of course, many roads are named after trees. Which brings me to the Wadswick Green courtyards!

Fortunately, we are not still living as early settlers, although it might have felt like it when we first arrived here, and now sat nav and social media have overtaken word of mouth for navigation. So the names of BIRCH, ROWAN, and ASH, although traditionally used for orientation and the landscape, are just names of native deciduous trees and ALMOND has been included to add a bit of variety! In fact, I couldn't find an Almond tree on the site. Almonds prefer a more Mediterranean climate, but perhaps climate change will make that possible. I do wonder if CYPRESS Close as a name might have been considered, after all the swamp cypress at the entrance to Almond Close couldn't be bettered as a way marker, standing so tall and proud in the middle of the site. Again, not a native tree - from the south east of North America. In spite of its name, it's happy in well-drained soil.



ASH is familiar to us because of Ash die-back, (no, not just the name of a Wadswick Quiz team!) but for the disease causing so many trees to have to be destroyed. We have a seemingly healthy ash opposite our balcony, and the squirrels and pigeons enjoy eating the black sticky buds when they appear in May. It is often the last tree to come into leaf and often loses them all in one go, after the first frosts. The fruits are winged keys that turn brown after leaf fall. There is a saying about rainfall - and which comes into leaf first: 'oak before ash, in for a splash; ash before oak, in for a soak'. Anglo Saxons used the wood for spears and shield handles as the wood is strong and flexible, and it is still used today for oars, gates, tools and walking sticks. Ash is also very good firewood.



May to June followed by bright berries in September, enjoyed by birds. The rowan has all sorts of mythology and folklore attached to it. It's supposed to protect against witchcraft; in Ireland and Scotland farmers would nail a branch to cattle sheds to protect their animals. The wood is strong and used for walking sticks (should you own one of these you will never get lost!), tool handles and traditionally rowan wood is used for making spinning wheels. Rowan berries can be made into jelly of a beautiful orange colour that is excellent with game.

Having described some (certainly not all) of the characteristics and uses of the four trees, it would be remiss not to mention all the other wonderful trees here at Wadswick Green. How lucky we are! The oak trees are a major part of the Wadswick Green landscape and are known to support 284 different species of insect and 324 species of lichen, and the range of fungi is even wider and more obscure, both below ground and deep inside the wood itself.

Hard to visualise! The trees do not produce acorns until around 40 years old. It is excellent timber, once used for ship building, and still used in house building. The bark is used for tanning

leather and the wood is excellent firewood and was used by Druids for ceremonial fires - druid meaning 'oak man'. Perhaps it would be difficult to use the oak as a courtyard name as their presence is felt throughout the site, and I feel grateful that we can see these, and so many more wonderful trees from our apartment.



So what does a name mean to us? Identity, an image, a sense of place and belonging? Ash, Almond, Birch and Rowan do sound like they belong in a countryside setting, protecting us from wind, rain and sun, and a place we can call home.

BIRCH - The Silver Birch is sometimes known as the 'shining tree' because of its silvery bark. We have a tall one in Birch Close which is snuggled up to the large Plane tree at the top of the close, quite difficult to see because the Plane is so spreading, but there are several smaller younger ones also. The foliage is light and airy, the leaves form a triangular shape with 'double teeth' (the teeth have teeth). Its leaves are pale green but golden yellow in autumn. It often grows in a fountain shape.

Birch bark is very versatile, rolled up it can be used as a torch due to its volatile oil. A slice placed in the sole of a boot is said to act as a foot warmer. In the north USA the bark was used to make canoes by native tribes.

ROWAN - also called Mountain Ash as it can grow in mountainous areas - higher than any other native broadleaved tree. Flowers appear in



# Photographic Group

by Vic Steadman

With smart phones in nearly everyone's pockets nowadays, we are all potential photographers. More photographs are taken every day than any other day in history and yet most of them are only viewed by a small audience for a few seconds despite the millions of photographs posted on the internet.

It is easy to engage an audience that has an emotional link to the photographer and the subject but it is extremely difficult to produce the level of art which a stranger may wish to hang on their wall. It takes a mix of artistic vision, photographic skill, knowledge, and a lot of luck to make that transition from family snapshot to fine art photography. We cannot all reach the highest fine art but we can have fun moving in that direction.



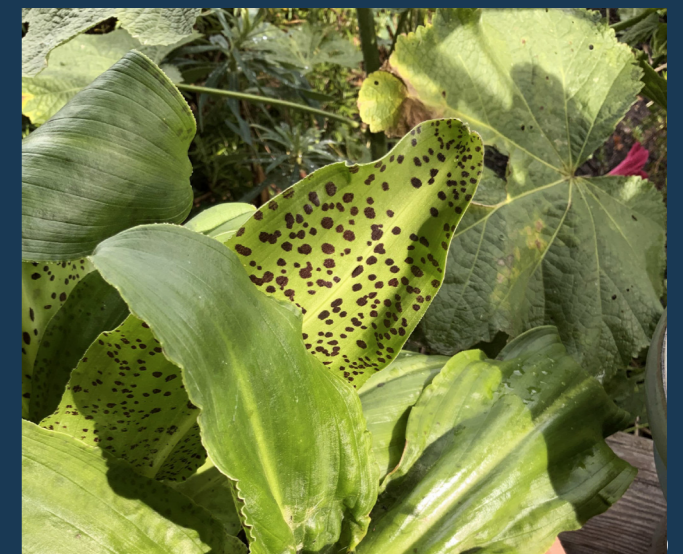
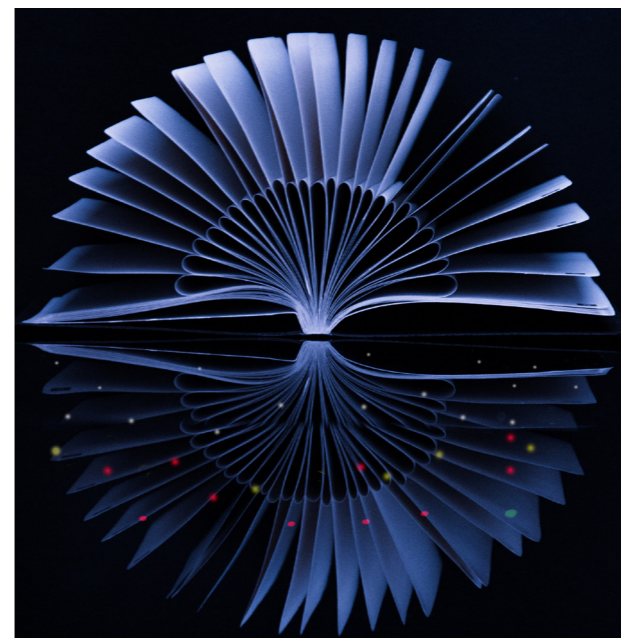
We welcome new members. If you want to learn more about the club take a look at our portfolio website, [vicsteadmand36f.myportfolio.com](http://vicsteadmand36f.myportfolio.com) or contact me. In the meantime, here are a few of my favourite recent images.

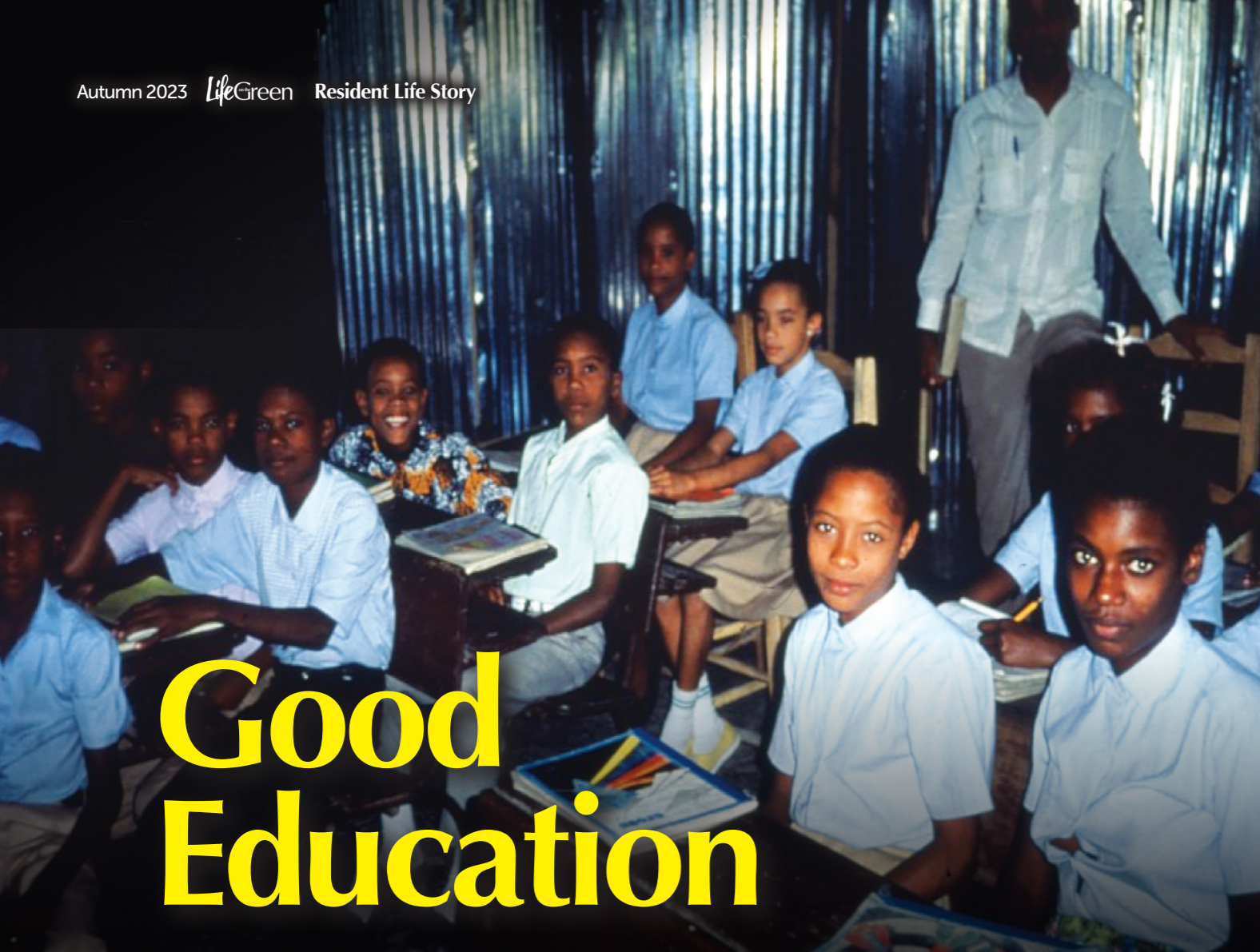


That potential has led to a small group of residents coming together to form The Wadswick Green Photography Club. We all have in common a desire to take more photographs and to improve the quality of those photographs. The club caters for all types of camera from mobile phones and tablets (probably the majority) to high-end traditional cameras and everything in between, as well as all levels of photographic skill from absolute beginner to hardened expert. We all have something to learn or knowledge and experience to share.

We meet once a month (last Thursday at 10.30) for either a field trip locally to take photographs, or for discussion, constructive criticism and a little bit of theory. We also have a website and a weekly email newsletter to encourage, advise and generate a bit of discussion (not too much at the moment, though I am hopeful we will have more) away from our meetings.

We do not run competitions and there is no compulsion to do anything but we do hope that everyone learns from the experience whatever their level of photographic skill. We hope to learn from each other by looking at photographs, discussing what works and what does not and by sharing advice.





# Good Education

**Wadswick Green residents Doreen and Sebert Lane have been on an incredible and inspiring journey, making a huge difference to the education systems in various places around the globe.**

We've been married 72 years and life seems to have been a series of adventures. We were both qualified teachers and started our careers in Harlow in the 1950s when Harlow really was a New Town. We were very involved in the town's development as elected members of the New Urban District Council.

Following this Sebert was appointed to an exciting Headship at Queens College, Nassau, Bahamas where Doreen opened a new Home Economics Department.

**To racially integrate the school was very important to us.**

Most of the white government had been former students and some of our school governors were too. It was not always easy! With 85% of Bahamians black there was no place for a school for solely white children.

By 1971 the school was happily integrated, the roll had grown from 650 to 2000 when we returned to England where, by now, our three daughters had returned to university.

Sebert's next appointment was to open a new school in Hertfordshire. One thing Sebert enjoyed was the use of the County Environment Studies Centre in Epping Forest. In alternate years a class could spend a week there and have a great experience. In 1978 we

both resigned as we resolved to open a similar centre to enable every year group to have the same opportunity.

In West Wales we bought a working dairy farm. Here we established facilities for four schools in different parts of the farm.

**Within a few years we had taken over 8 small hotels too, solely for school use.**



We prepared their programmes, organised their visits and arranged their daily transport.

We retired for the first time when we sold our business in 1984. But retirement didn't come easily even though we built homes in the Canary Islands and had a home in Florida.

**We knew that there was one more major project to be done...**

In 1991, in the Dominican Republic on the Haitian border, we saw a 'school', which housed just 20 children in the morning and 20 in the afternoon. There was not one book in the room, a few broken desks, no water supply, no toilets and just a depressed teacher, who worked on a board with chalk he bought himself. The oldest girl was 14 but had only reached the third year! There were hundreds of children not attending school at all.

**The villagers said they would work voluntarily when we offered to direct the building of a new school and raise the necessary funds.**

We moved into the village for five years and they kept their word. Within five months, four concrete well-equipped classrooms with a water supply and electricity had been funded by a specially formed charity, and the first 120 excited children attended for the first time.

**Within a few years there were two schools accommodating nearly 1000 children in all.**

An ambulance service was established with radio links to surrounding villages, and today two medical clinics serve the two villages of Bombita and La Hoya as well as nearby communities. The teachers are nearly all former pupils of the two schools who have qualified as teachers with a Dominican Degree.



**Some pictures of the planning and building of the school in the Dominican Republic.**



**Now in our nineties we really believe we have retired properly to this wonderful village of Wadswick Green.**



# Wiltshire Walks...

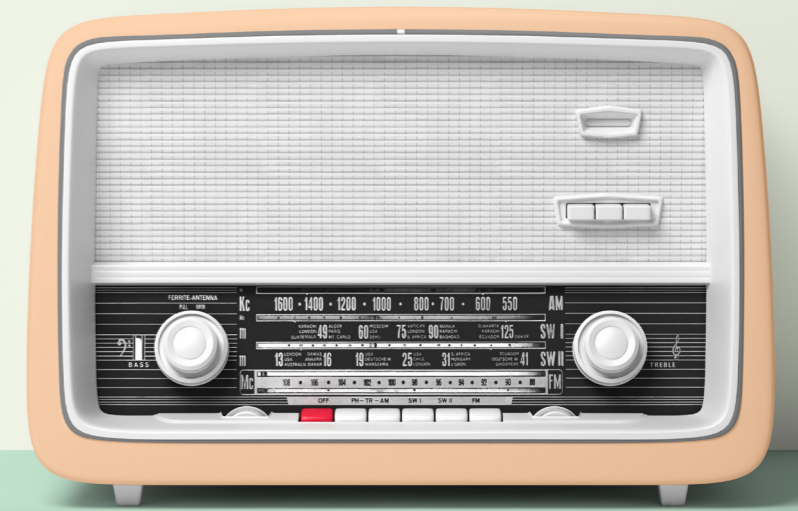
## Walking with Jenny and the Wadswick Walkers...

About once a month I arrange to take a group of willing participants on a walk which is slightly longer than those undertaken by the Friday group. In July seven of us walked from Bradford-on-Avon, following a circular route which took in part of the Kennet & Avon canal, the village of Westwood and lovely Avoncliff where the canal and the river cross each other; a route of about 7 miles across fields, along tracks and lanes, through woodland and along towpaths.

I always research these walks before inflicting them on my companions and they had been well warned of the steep inclines and awkward stiles which would be encountered. Their efforts were rewarded by views across our lovely county and the promise of refreshments at Avoncliff. Maybe these walks are a little strenuous but the feelings of wellbeing and sense of achievement after are always welcome.



Jenny Gray



# Radio Programmes

Radio offers so much and we all have our favourite programmes.

## Our residents share some of their favourites here...

I am a Radio 4 addict. Amongst my favourite programmes must be The Archers. A rural idyll soap opera that replaced Dick Barton Special Agent many moons ago.

**Sylvia Humphries**

Radio 3 at 12 pm every weekday: Composer of the Week. This hour of music and biography of a different composer each week gives Donald MacLeod an opportunity to explore in depth the life and music of someone we may know well or not at all. Either way your knowledge will expand, and, combined with proper excerpts from their music, you may find the programme very rewarding.

**Ann Veronica Scaramanga**

I'm not sure if I should be admitting to this but I am still listening to The Archers. It was always part of a Sunday morning when I was a child and, with a few gaps, I've been listening ever since. At least I can now listen in small doses on BBC Sounds!

**Jenny Gray**

Dick Barton Special Agent was on every weekday evening at 6.45 from Oct 1946 to Mar 1951 and I listened to it with my Dad who had just got home from work. I believe it was replaced by The Archers!

Keith and I enjoyed Beyond our Ken, a very funny programme with Kenneth Horne, Kenneth Williams and Hugh Paddick from 1958 to 1964. We bought our first TV in 1960 to watch The World Cup so from then we tended to only listen to music programmes during the day.

One other favourite was Sing Something Simple with Cliff Adams and his Singers - how times have changed.

**Maureen Watson**

I always seem to find myself making a coffee just before 11.30 am on Saturday and settling down to listen to Kate Adie introducing From our own Correspondent, where BBC journalists report from all round the world on events where they are. Most are very factual and serious in content but others give a more personal perspective on living in a foreign country. A really enjoyable and interesting half hour.

**June Game**

Classic FM has a good selection of light music with interesting comments, presented by people that you know from another guise.

**Diana Wilkins**

I enjoy Test Match Special for the good chat, humour and knowledgeable cricket insight - except when Geoff Boycott is on, when I switch off!

**Graham Wilkins**

In 1957, my father's job entailed a move from Doncaster to Reading. I was sent to the very select Girls' Grammar School where my South Yorkshire accent was very much out of place and was soon knocked out of me. I missed my friends and the familiar places I'd left.

The only thing that kept me going and made me laugh was being able to hear The Goon Show every Thursday evening. The pleasure was even greater the next morning when I could join in the laughter again with the boys and girls travelling on the bus to mine and various other schools.

**Carol Edgar**



# Moments in Time...

## Remembering some historic moments...

### Steve Besent

I saw the Beatles perform at the Granada Cinema in Tooting on 1st June 1963. They were joined by Roy Orbison, Freddie and the Dreamers and Cilla Black. I am reliably informed that the Beatles sang Some Other Guy, Do You Want to Know a Secret, Love Me Do, From Me to You, Please Please Me, I Saw Her Standing There and Twist and Shout. I couldn't hear a thing for all the screaming!

### Sheila Diviney

In 1965, when I was sure I was going to become Mrs Paul McCartney, I happened to be in Knightsbridge, London, where a small throng of Beatles fans were gathered. I joined them and a few minutes later Paul appeared in his Aston Martin. I opened the door and asked if I could have a sit in it. He said "sure" and we drove about 30 yards into the mews in it. When it stopped outside where they were staying, I said thank you and got out! Happy Days!

### Derek Archer

As IBM systems manager for UK Aerospace based in Bristol I was kindly invited to Filton airfield to watch Concorde's maiden flight. IBM had supplied computer systems for its design and build. Hundreds of staff and others waited opposite the runway at about midway point with Concorde hundreds of yards away at the start of the runway. We waited with bated breath as what seemed like a long start up routine. The plane looked so ordinary at a distance. Then, first signs of its movement, so slow at first; then faster and nearer to us, Concorde's incredible and unique shape sped past us to rotation and lift off. The world's first supersonic passenger plane was flying.



### Graham Wilkins

I was there on 22nd January 1976 on the roof of the terminal building at Bahrain airport to see the inaugural Concorde flight touch down at the start of its hot weather trials - and I have the first day cover to prove it!

### Carole Edgar

My memorable event was 21st July 1969, when I heard the news of the First Man on the Moon. It was such an exciting time but, sadly, took 2nd place to the fact that I then started the first throes of labour with my son, who was meant to be born at home at the end of July. After several false starts I eventually gave birth in hospital on 31st August. After two girls, I finally had my very welcome son. So, my miracle baby's birth began on the day the first man walked on the moon.



### Nina Oldfield

In August 1978, I was in Nairobi with my husband Maurice, who was there on business. We planned to have a few days on the coast at Mombasa. On the 22nd, when we had been in the city for a day or two we sensed a sudden change in the general mood and then heard the news that the first President of Kenya, Jomo Kenyatta, had died suddenly while on holiday in Mombasa. The whole population was now in mourning.

### John Pease

Most people will have memories conjured up by "9/11" but our office, in New York, was in "line of sight" and, having been made aware of the first plane strike, we were actually watching events unfold. Memories are still vivid particularly as we lost close friends. Still seems like yesterday.



### David Little

My Dad and I bought season tickets for all the England games including the quarter and semi-finals, all at Wembley. England progressed to the final with narrow wins and a draw. The 1-0 win against Argentina stands out as their notorious Rattan was sent off but (initially) refused to leave the pitch! Sir Alf Ramsey famously referred to their team as "animals". We won the semi-final against Portugal 2-1 with Bobby Charlton scoring twice and Eusebio replying. I won a final ticket via the season ticket holders' ballot. At the final, we led 2-1 until West Germany equalised in the 90th minute - aargh!! - but we went on to win 4-2 after extra time. It was memorable to watch skipper Bobby Moore lifting the World Cup!

### June Grant

June witnessed a doodle bug in the war, watched her husband carry The Olympic Flame for London 2012 and in the 1970s we all watched three Concorde land at Washington Dulles airport from France, the UK and Singapore.

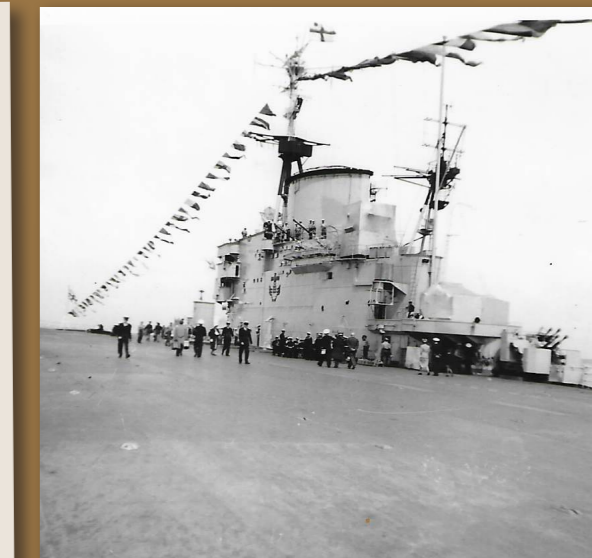


### Charles Kerr

In June 1953 as a Sea Cadet I joined HMS Implacable, a Fleet Aircraft Carrier moored in Portland Harbour. We were then towed to Spithead to be part of the Queen's Coronation Fleet Review. I cannot recall that there were any complaints of there being all those sailors loose in ships moored off Weymouth in those days

### Vic Steadman

In 1987 as a young army officer I was stationed in Antwerp, Belgium liaising with the civil authorities. My responsibilities included medical evacuation of servicemen from the Low Countries after accidents and repatriation of bodies to the UK. On 6th March that year I became part of a British army team working with the Belgian military and civil authorities recovering, identifying and returning bodies to the UK from the Herald of Free Enterprise, a ferry that sank on leaving Zeebrugge with the loss of 193 lives.





## Meet Christa Rimington

On a sunny afternoon in June I went to have a chat with Christa Rimington, one of the first people to move into Wadswick Green. Before we settled down to talk over coffee and doughnuts, I had to meet Christa's uninvited guest. There, under the roof of the balcony, was a pigeon who had chosen this spot to nest and lay her eggs. She looked at us as though to say "Don't you dare disturb me." The wildlife at Wadswick never ceases to delight.

### *Christa lived in Singapore for 20 years*

She went there initially as a young mother of two to join her husband Roy, who was an officer in the RAF. When Roy's tour of service there ended he was looking at the prospects of a

job in Whitehall, so instead took advantage of the 16/38 scheme and opted for early retirement. 16 is the minimum number of years served and 38 the minimum age at which an officer can retire from the services with a pension. Roy was thus young enough to start his own business and the family were able to stay in Singapore.

During this time Christa did some work as an interpreter and she told me the story of a German gentleman in court charged with impersonating a policeman. Christa was able to explain to the court that, contrary to the charge the gentleman was doing what any responsible German citizen must do, diverting the traffic away from an accident and not playing being a policeman.

When eventually Roy sold his business and the family returned to the UK, they settled in a Mendip village overlooking the

Chew Valley Lake and the hills around Dundry.

Inevitably the house and garden became too much (we all know that feeling).

Christa and Roy moved to Rowan Lane, Wadswick Green, where they were still able to enjoy the space and far reaching views.

These days you will find Christa in the pool early every morning except Sunday, and on the croquet lawn every Wednesday. Her great love always has been and still is the opera. Her family still take her to Cardiff for a night at the opera. On Roy's 90th birthday the opera came to him as he was no longer able to travel. An afternoon that those of us who were there will never forget.

We wait to hear how the pigeon and her babies fare.

*by Sylvia Humphries*



## Meet our newest arrivals to the village...

**Lennie Almond**



I chose Wadswick Green because it takes dogs, its close proximity to my daughter and grandchildren in Batheaston and its lovely rural location, although downsizing was a huge challenge.

My working life was spent as a nurse, both in the UK and USA. I worked as a nurse teacher with senior NHS staff and trained as a counsellor. My husband was an academic at Bath University and I have been a widow for six years.

I am quite active walking my Cocker Spaniel Sam, going to the gym twice a week and swimming. I belong to U3A in Bath, a village choir and book club in Bathford and I hope to try croquet and aqua aerobics at WG.

All the residents have been so friendly and helpful, as have the staff and I look forward to this new and exciting phase of my life.

**Patricia Buckland**



I am a retired dentist and graduated from the University of Manchester in 1959. I always wanted to live in Wiltshire because my father's family came from the Netheravon area, and I spent many happy holidays there as a child. I moved down here from North Staffordshire soon after qualifying and never regretted it; Wiltshire is a lovely county.

My main interests are wine tasting and playing bridge. I have had an interest in wine since the days when a bottle of Nuits St Georges cost seven and sixpence; those were the days! It is about £40 for a basic bottle nowadays.

I played bridge with the Bradford-on-Avon and Bathford clubs for many years and look forward to making new bridge playing friends here at Wadswick Green.

**Annette Henry**



I was born and grew up in Middlesex and whilst at school took a commercial course in shorthand and typing, enabling me to take up a career as a secretary. I have two sons, Paul and Andrew, and a grandchild called Nancy. We lived in Stokenchurch in the 1970s and moved to Stoke Mandeville in 1980 when I returned to work as PA to the MD of an international consultancy company.

**Meet more of your new neighbours overleaf...**

**Brenda Claxton**



I moved into Wadswick Green in early December 2022; it is just beginning to feel like home.

I lived most of my life in South London where I worked as a Bereavement Counsellor and Psychotherapist. I have three children and in 2020 I moved near Bath to help care for my two grandchildren and trained as a Massage Therapist.

As a child I was evacuated to Combe Martin for five years and loved the countryside and the sea. My late husband, Ted, and I regularly walked in the Lake District, climbing the mountains with our dogs. I kept bees and regularly wrote beekeeping articles.

I played hockey at school and now enjoy playing croquet. I love the countryside and walks around Wadswick Green and have met many friendly people here. Wadswick is full of interesting groups, and The Greenhouse is where I can always find someone for a chat.

**Lesley & Nigel Mortimer**



We moved to Wadswick Green in December 2022 from Winterbourne, Bristol and are thoroughly enjoying the whole experience, making full use of the facilities.

Getting together in 2009 through our love of Bridge, we married in 2015. Lesley has lived in the Bristol area her whole life, whereas Nigel has lived in the North, Midlands, London and East Anglia. Leslie has four children, two stepchildren, eight grandchildren and two great-grandchildren. Nigel has two children and one grandchild. As well as Bridge, Lesley loves riding, tapestry, painting and Pilates. Nigel is an IT consultant but is now actively involved in teaching Bridge professionally, golf being his other preoccupation.

We both enjoy entertaining, and Lesley enjoys cooking for dinner parties. We have an allotment in Bristol, which is very time consuming, but our love of fresh vegetables makes it worthwhile - just!

**Derek Gough**



I was born in Weymouth in 1943 but we moved to Portsmouth, where I was educated. I left school in 1959 to start my Electrical Craft Apprenticeship at HM Naval Base Portsmouth and I stayed with MOD (Navy) for the rest of my career.

I met my wonderful wife Kay while we were both working at the Clyde Submarine Base and we had two delightful children, Mary and Andrew. We moved to this area in 1983 when I worked at Spring Quarry, Foxhill and Abbeywood. Sadly, Kay passed away in 1995 and missed the joy of having four lovely granddaughters.

I have always been keen on football and support Portsmouth, being at Wembley to see them win the FA

Cup in 2010. I used to sail bosuns and lasers, played lawn bowls and have an interest in steam trains. Now I am trying croquet and boules at Wadswick Green.

**Graham & Pamela Walker**



Graham was born in Hendon and studied Construction at Watford Technical College. After National Service in the RAF he worked for a Leicestershire-based brick and pipe company. Pamela was born in Carshalton and studied dress design at Sutton & Cheam Art College before employment at a Design House in London.

They met in 1958 and married in 1959, moving to Leicestershire with Graham travelling widely including to Holland and the USA. Taking early retirement, Graham became a Magistrate in the City of Leicester and a Non-Executive Director of The Leicester General Hospital NHS Trust. Having always had an interest in cooking, Pamela studied catering and worked freelance in the catering industry.

They both play golf and enjoy cruising. They moved to Wadswick Green having maintained contact with friends in Wiltshire and are gradually settling down to village life in a rural setting.

**Diana & Marcus Ross**



Diana was born in Sydney, Australia and had an early career in the fashion industry. She came to

England in 1959 to study ballet. In 1970 she started a career in all round antiques before specialising in 19th Century fine porcelain, dealing from a shop in Islington's Camden Passage. Diana's interests are history, art, ballet and reading biographies. Marcus was born in London within the sound of Bow Bells. He also had a shop starting as a general antiques dealer, then specialising in Oriental porcelain. Marcus's interests are football, cricket art and is a fan of Wilbur Smith books.

With a shared interest in antiques, they enjoy visiting stately homes and galleries. They retired from London to Bath, where they lived for eighteen years, before coming to Wadswick Green. Something they feel they should have done earlier.

**Pauline & Tim Humphries**



Pauline and Tim first met as students in Bath at the end of the 1960s. They subsequently married in 1972 and have spent most of their married life living in and around Reading.

Tim is originally from Wadebridge in Cornwall. He spent his working life in various roles in IT as it developed from punch cards to the internet. Pauline is from Burnham in Bucks. She trained as a teacher and taught mainly Science and Technology.

They have two sons, both of whom have settled in this area with their own families, which was one motivation for moving to Wadswick Green. Since retirement Tim and Pauline have enjoyed walking and travelling. A recent theme has been visiting isles and islands around the UK and they have notched up over a dozen so far.

**Owen & Georgie Paterson**



Owen and Georgie arrived at Almond Close in mid-July from Taunton. They met in the mid-1980s at a BBC news subsidiary. Owen has spent all his working life in broadcasting, mainly television, and had come to the UK in 1969 from New Zealand to gain more production experience but his flourishing partnership with Georgie persuaded them to form a small highly specialised company producing live international satellite events for broadcast networks, global companies and organisations like UNICEF. Together they produced many global TV events, working with royalty, heads of state and film recording stars.

On retirement they spent 12 years in New Zealand during which time Owen also set up a new radio station in the South Island. Interests include Rotary Clubs, golf and cricket.

**Colin & Lilian Foster**



We were both born in Solihull, met while at school and married in 1968. Lilian qualified as an Occupational Therapist and enjoyed meeting people from all walks of life in need of rehabilitation. Colin took over the running of a family wholesale business which expanded over the next twenty-five years.

For many years we enjoyed a holiday home in Trearddur Bay, Anglesey,

enjoying the sea, beaches, sailing and diving with our two children and friends. We both played golf in the 1990s and Colin still plays today. Lilian enjoys painting, music, Pilates, walking, W.I. membership and community events.

In 2010 we took a major decision to move to Neston to be closer to our daughter and family who farm locally, spending happy years forging a new life and friends which we are able to continue with our move to Wadswick with our Border Terrier Lucy.

**Norma & Brian Pearce**



We met at Exeter University where Brian was studying Economics and Norma Botany and Zoology. We married after graduation with Brian joining the electricity supply industry travelling around the country with different Electricity Boards. Our children were born in North Devon and the Lake District. Norma taught in a variety of schools and colleges while caring for the family. Brian took early retirement and Norma became head of the Biology Department at a girl's school in Exeter. She also took early retirement and joined one of the A level exam boards as an examiner.

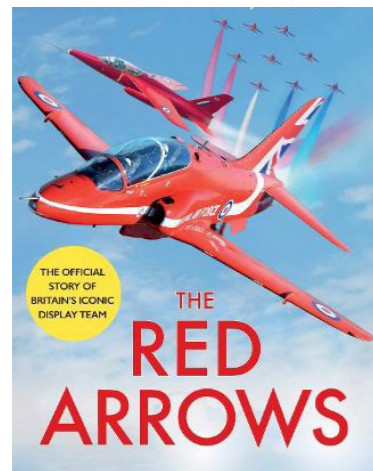
We belonged to a French Twinning Society and enjoyed improving our language skills, travelling widely around the French regions. Norma has researched our family histories, tracing her family from the North East back to the 1700s.

Our family persuaded us to move to Wadswick Green to be nearer to them - just in time to celebrate our 60th Wedding Anniversary.

# Book Reviews

## The Red Arrows

by David Montenegro



To have had the excitement and thrill of watching a display by the Red Arrows in one or more of the locations in UK or possibly abroad, is something never to be forgotten. You may have had the experience watching with family and friends. David Montenegro describes what it is like to climb into a Hawk aircraft to lead the nine members of the team in their breath-taking display. His excellence has been recognised with three tours of six months of shows as Red 1. What an honour! Behind all such displays is a dedicated ground crew of over fifty men and women whose job it is to have every aircraft in tip top condition in readiness for their pilots.

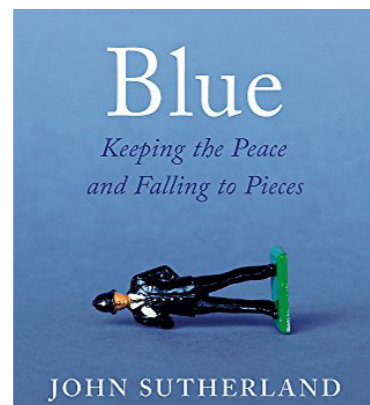
Wing Commander Montenegro completes his absorbing book by saying "To be given the honour to represent our service colleagues in such a dynamic way and to be ambassadors for the UK, is a truly life-changing experience that I hope future generations have the opportunity to experience for themselves."

When serving as the Chaplain of the Royal Naval College at Dartmouth, my family and I watched the Red Arrows carry out a memorable display. They swooped down over the River Dart, flying low over the water before disappearing out to sea. My boys have never forgotten it. Displays no longer take place there now as the venue is considered too dangerous!

Reviewed by **Bill Weldon**

## Blue: A Memoir - Keeping the Peace and Falling to Pieces

by John Sutherland



The sight of a policeman quietly carrying out his duties on the beat had such an effect on John Sutherland as a teenager that he decided to aim to join the police force himself. After university, he realised his dream by being selected to join the Met in 1992. His utter dedication to service, combined with his commitment to both his colleagues and the community he served, meant he experienced a meteoric rise through the ranks to greater responsibility. He experienced all

that is extraordinary about a life in blue: restraining the dangerous, comforting the broken and displaying calm leadership amidst chaos. The reader is given a moving and very personal insight into what it is to be a police officer in Britain today.

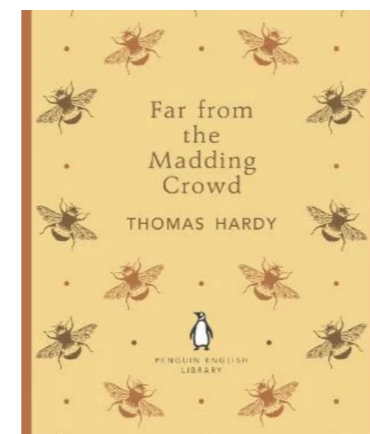
His career had an increasing effect on his own mental health, despite his happy home life and personal faith. Sadly, he had a major breakdown, which meant he had to step down from frontline duties. He began a second career as an author, producing this book, another volume about the lessons to be learnt from a life on police duty and, latterly, some thrillers.

Blue is a book which tells us as much about mental illness as it does about policing.

Reviewed by **Dinah Weldon**

## Far From The Madding Crowd

by Thomas Hardy



I was surprised by an article that appeared in the last magazine about Thomas Hardy! I have read most of his novels and by far and away my favourite is Far From The Madding Crowd.

This may be in part due to the wonderful descriptions of countryside in an area of the country that I happen to know well. The patterns and rhythms of country life with its hardships and dangers, as well as the joys of harvest and the ensuing celebrations are described well.

The main characters are well drawn and from the outset Gabriel Oak (such a well-chosen name) soon shows himself to be a decent, hardworking and caring individual. We have the twists and turns which affect the female characters in particular, showing how vulnerable women were in the 1870s. Bathsheba, by the good fortune of inheritance, has choices but still has to behave with considerable care in a rural community, while Fanny portrays the pitfalls of being a fallen woman. Then the handsome rogue, Sergeant Troy, apparently leading a charmed existence until his past catches up with him. Lastly the lonely, wealthy farmer Boldwood, desperate for love but in the process adjoining his land to his neighbours and increasing his worth. His obsession for Bathsheba was all encompassing and land was perhaps in this case not his priority. For once this novel does have a happy ending for our heroine Bathsheba and Gabriel Oak.

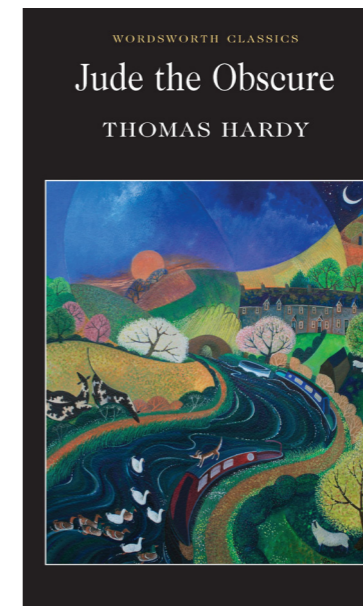
What I have written may in no small part be influenced by the films developed from this novel. Who can forget Terence Stamp, Julie Christie and Alan Bates along with Peter Finch in a version from many years ago? It has of course been filmed again more recently.

Reviewed by **Hilary Flack**

## Jude The Obscure

by Thomas Hardy

Regarding Thomas Hardy, the book that had the deepest emotional influence on me was Jude the Obscure. It was almost the male reflection of Tess's story in that what happened to them

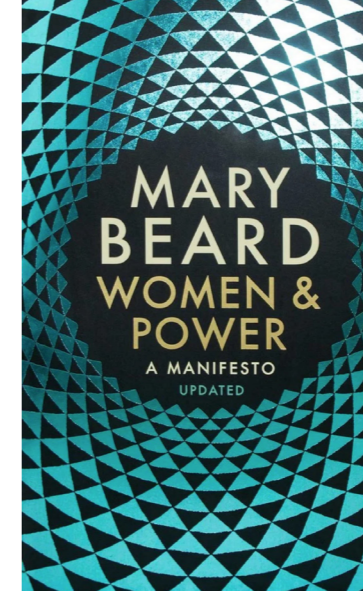


was determined not just by their own dreams and actions but by the actions of those around them as well as those who lived before. So Hardy is still relevant today. There are still many less fortunate people around us who are victims of the life and social mores around them, though those of us with better chances in life and education have been able to avoid the pitfalls of characters such as Jude and Tess.

Reviewed by **Carol Edgar**

## Women and Power

A Manifesto by Mary Beard



Mary Beard is one of our most prominent academics. She is Professor of Classics at Cambridge and Fellow of Newnham College. At 18 she won a place at Newnham but in her first year found some men still held dismissive attitudes to the academic potential of women. This only increased her determination to succeed and the development of her feminist views. She has been the recipient of some vile abuse on Twitter.

This short book is based on two lectures Mary gave in 2014 and 2017. It focuses on the continuing efforts being made to silence women and keep them from power and how that culture is still, in the 21st century, heavily influenced by prejudices dating back to antiquity. The book is not meant to be objective. It does offer a number of comparisons between the ancient and modern worlds using classical Greek and Roman historical references. Mary argues that women should stop trying to change in order to fit our notion of power, but instead that society should change and redefine itself.

Whilst reading this book I found myself reflecting on my own life and workplace experiences of differing attitudes towards women.

Reviewed by **Ruth Wortley**

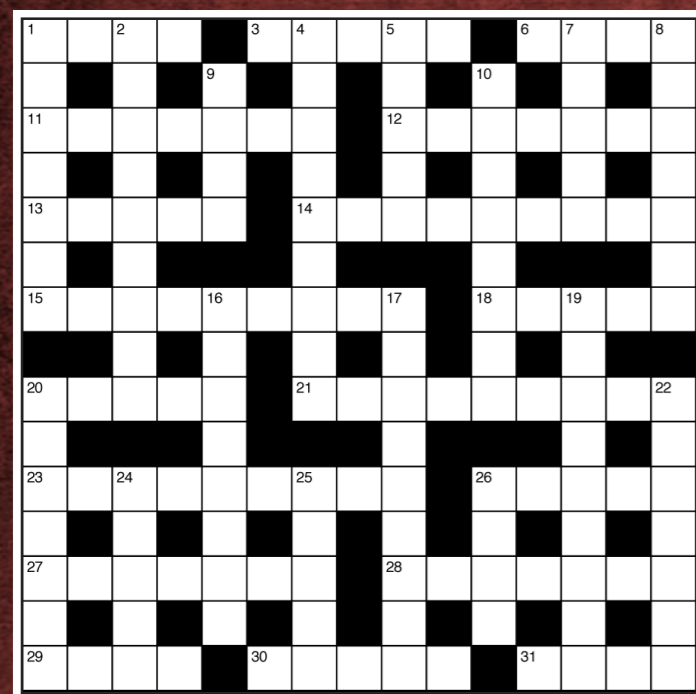
This book raises the question about how often women's rhetoric is ignored or belittled as a way of minimising their influence. It traces misogyny back to Ancient Greece and Rome and despite being 2023 we unfortunately have a long way to go.

Our discussion at Book Club questioned if we as women ever had misogynistic thoughts ourselves and concluded that, yes we did, and that in an ideal world each person should be treated as an individual. This book certainly makes you question your own thoughts and ideas.

Reviewed by **Jeanette Cowler**

# puzzling PUZZLES

## Crossword by Ukeman



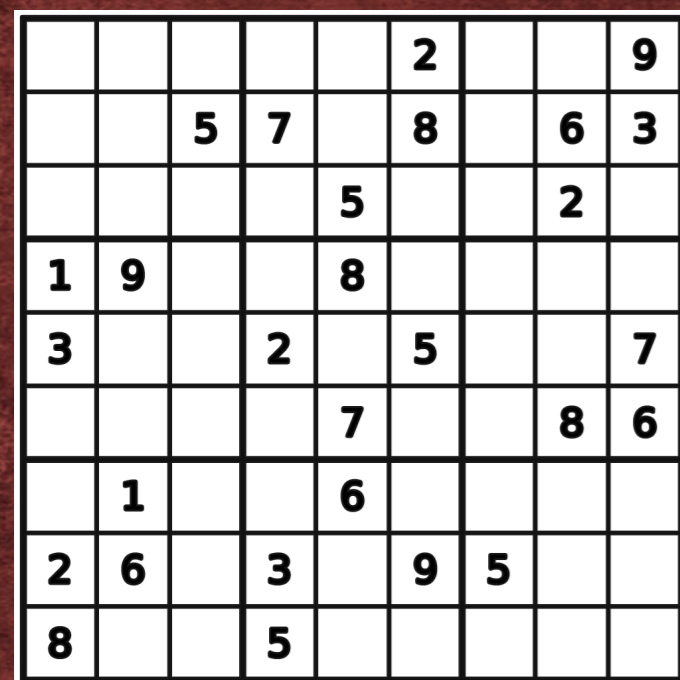
### Across

- 1 Show off second-rate newspaper (4)
- 3 Being drunken in unrestrained bout (5)
- 6 Mountain capital hid lost civilisation (4)
- 11 In all cases ignore alien (7)
- 12 Del Boy on horseback? (7)
- 13 Set goals in Nigeria (5)
- 14 How one may be caught when preparing beetroot! (3,6)
- 15 Let go out on the pitch (9)
- 18 Loch Ree's embedded pigment (5)
- 20 Aircraft is unremarkable, it's said (5)
- 21 He aims to catch Carrie with bloke (9)
- 23 Elephant in the music room? (9)
- 26 Kind American after information (5)
- 27 CR Earle restyled as thriller writer (2,5)
- 28 Seeing captured king in intelligence network (3,4)
- 29 Drinks sale over (4)
- 30 Clipped damaged trees (5)
- 31 Nelson, say, in a spin (4)

### Down

- 1 Went on and blabbed foolishly (7)
- 2 Fermented algae's in a pain killer (9)
- 4 Confused info around school times, to be specific (2,5,2)
- 5 Restricted heads of Glasgow Academy (Technical Education Department) (5)
- 7 Observed Edward's exclusion (5)
- 8 Shorten a crossing (7)
- 9 Runners' tempestuous kiss (4)
- 10 In a deep sleep, so came to dizzy! (8)
- 16 Sadly, Peter Nix is not skilled (8)
- 17 Doesn't have faith in detective's investments (9)
- 19 All of us being generous (9)
- 20 Boone and Fitzgerald on a bender! (7)
- 22 Yon sage comprises posy (7)
- 24 Homespun cleric accommodates relative (5)
- 25 Article on chronic fatigue topic (5)
- 26 Organise yoga for painter (4)

## Sudoku



## Anagrams

Can you unscramble these names of trees?

- EMNOYK ZEPLZU
- SEYRCOMA
- EIWITH AEBM
- WPEIEGN WWLLOI
- RAECD FO NLOENBA
- RHESO TTSUENHC
- VLREIS HBRCI
- TWUANL
- ECPSUR
- SSTCO NIPE

# WORDSEARCH



## PHOTOGRAPHY...

Can you find 15 words associated with photography hidden in the grid above?

- |                     |          |           |
|---------------------|----------|-----------|
| <del>APERTURE</del> | FILTER   | SHADOW    |
| <del>BALANCE</del>  | FOCUS    | SHUTTER   |
| CONTRAST            | FRAME    | SUBJECT   |
| DEPTH               | LIGHT    | TELEPHOTO |
| EXPOSURE            | NEGATIVE | ZOOM      |

### Solutions to this issue's puzzles

**Solutions for crossword puzzle:**  
 ACROSS: 1 brag, 5 binge, 6 inca, 11 blanket, 12 trotter, 13 Lagos, 14 red handed, 15 dismissed, 18 ochre, 20 plane, 21 fisherman, 23 trumpeter, 26 genus, 27 le Carre, 28 spy ring, 29 ales, 30 terse, 31 eddy.  
 DOWN: 1 babbled, 2 analgesia, 4 in terms of, 5 gated, 7 noted, 8 abridge, 9 skis, 10 comatose, 16 inexpert, 17 distrusts, 19 humankind, 20 patella, 22 nosegay, 24 uncl, 25 theme, 26 Goya.

**Solutions for anagram puzzle:** MONKEY PUZZLE, SYCAMORE, WHITE BEAM, WEEPING WILLOW, CEDAR OF LEBANON, HORSE CHESTNUT, SILVER BIRCH, WALNUT, SPRUCE, SCOTS PINE.

# RANGEFORD VILLAGES

EXCLUSIVELY FOR THE OVER 60s

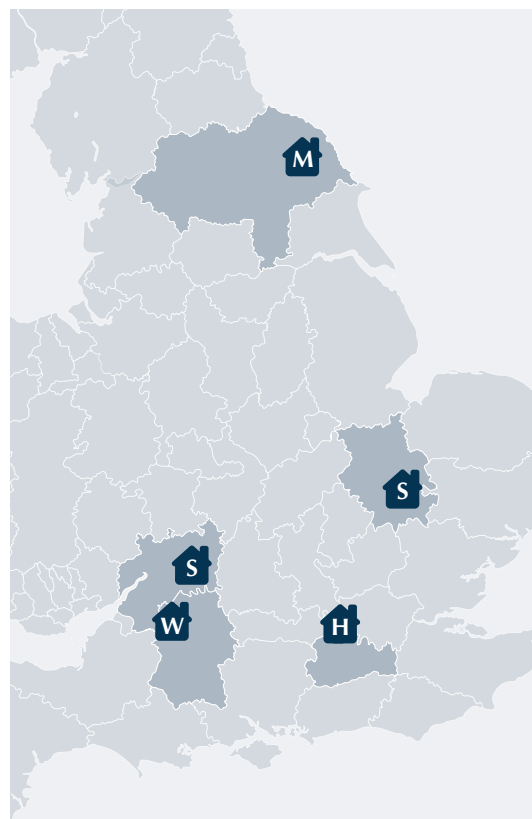


Homewood Grove  
Computer Generated Image.

## The Rangeford *experience* is expanding...

We're delighted to bring the highly coveted Rangeford lifestyle to more people around the country, following on from our award-winning flagship village here at Wadswick Green.

Our villages have a wealth of exceptional first-class facilities to create a lifestyle designed perfectly for you, each set in idyllic landscaped gardens with vibrant communities.



Siddington Park



Strawberry Fields  
Computer Generated Image.



Wadswick Green

Call **01225 220945** or visit [www.rangefordvillages.co.uk](http://www.rangefordvillages.co.uk)

