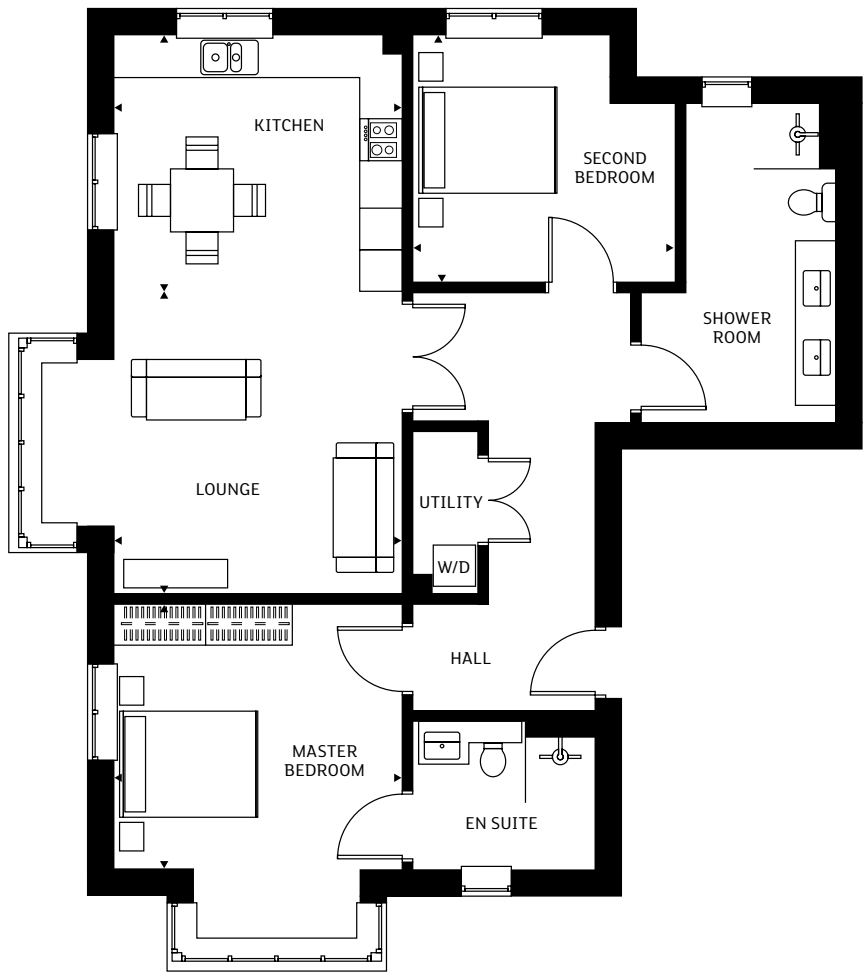


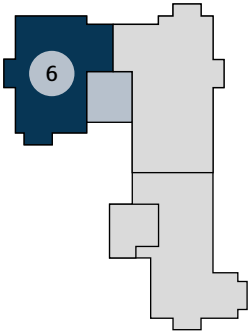
6 JUNIPER GRANGE - TWO BEDROOM APARTMENT



Apartments will include fitted kitchens and fitted wardrobes to the master bedroom.
The homes are sold unfurnished.

	Metres	Feet
Kitchen	3.70m x 4.20m	12'1" x 13'8"
Lounge	4.20m x 4.30m	13'8" x 14'1"
Master Bedroom*	3.87m x 4.20m	12'7" x 13'8"
Second Bedroom	3.51m x 3.70m	11'5" x 12'1"
Total Area	100.62 sq m	1,083 sq ft

*including wardrobes



FIRST FLOOR

Any sizes and dimensions provided are for indicative guidance purposes only and are not intended to be used for items of furniture. Bathroom, kitchen and wardrobe layouts are indicative only and are subject to change. Apartment areas are provided as gross internal areas and may vary.