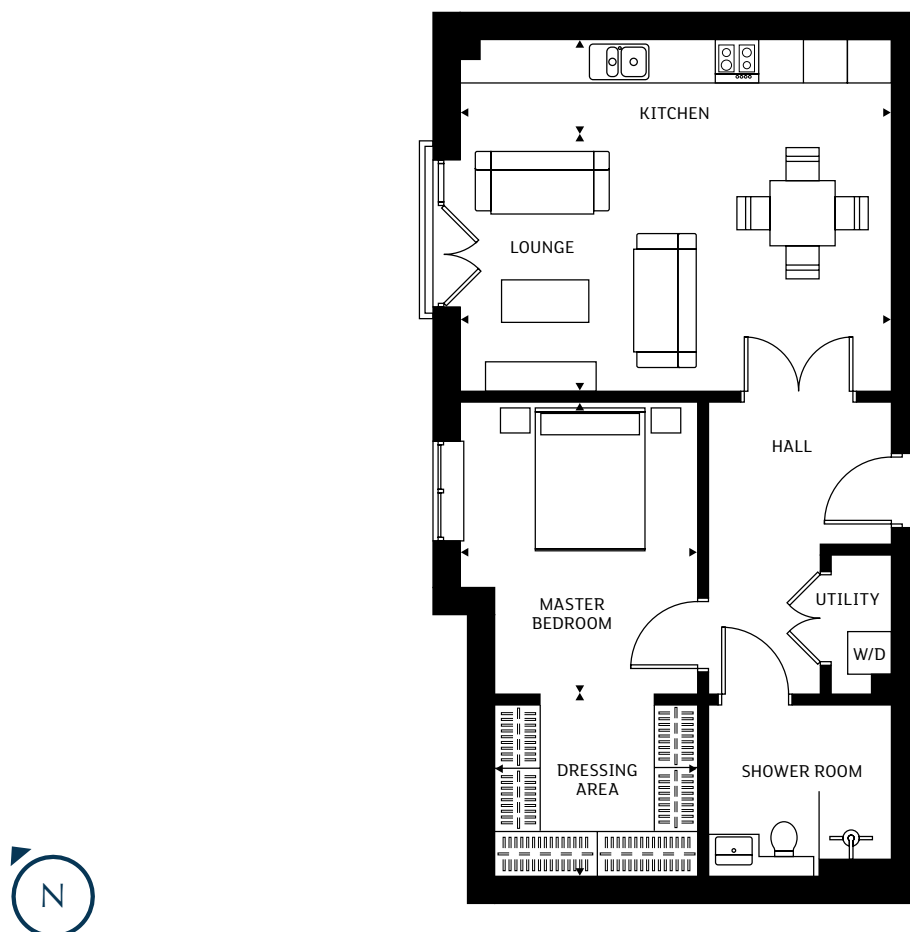
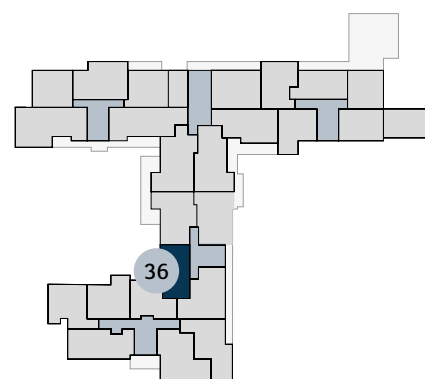


## 36 THE PAVILION - ONE BEDROOM APARTMENT



Apartments will include fitted kitchens and fitted wardrobes to the master bedroom.  
The homes are sold unfurnished.

	Metres	Feet
Kitchen	5.96m x 1.32m	19'8" x 4'4"
Lounge	5.96m x 3.50m	19'8" x 11'7"
Master Bedroom*	4.00m x 3.31m	13'2" x 10'11"
Dressing Area	2.76m x 2.54m	9'1" x 8'5"
<b>Total Area</b>	<b>66.41 sq m</b>	<b>714.83 sq ft</b>
*including wardrobes		



FIRST FLOOR

Any sizes and dimensions provided are for indicative guidance purposes only and are not intended to be used for items of furniture. Bathroom, kitchen and wardrobe layouts are indicative only and are subject to change. Apartment areas are provided as gross internal areas and may vary.