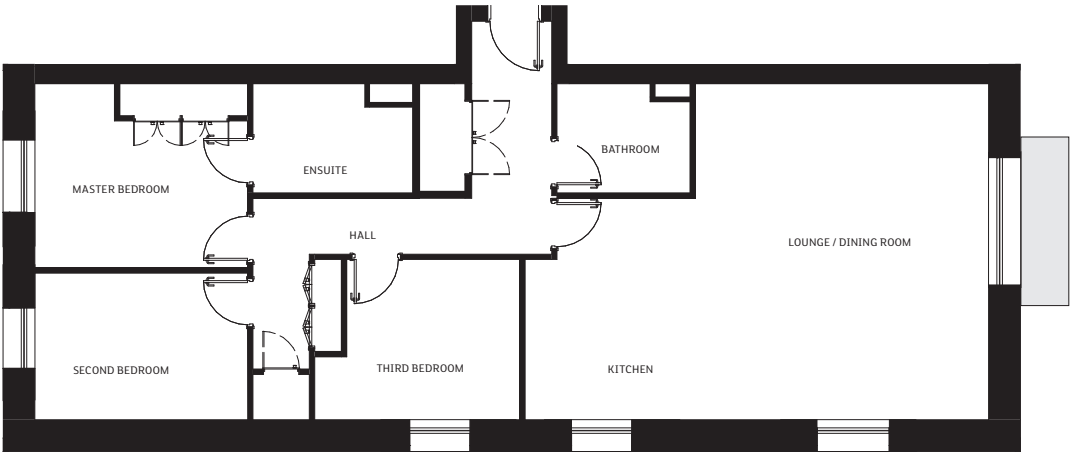


STRASBERRY
THREE BEDROOM APARTMENT



Apartments will include fitted kitchens and fitted wardrobes to the master bedroom. The homes are sold unfurnished.

	Metres	Feet
Kitchen	3.40m x 3.00m	11'2" x 9'9"
Living / Dining	5.30m x 6.30m	17'4" x 20'7"
Master Bedroom*	3.99m x 3.45m	13'1" x 11'4"
Second Bedroom	3.99m x 2.75m	13'1" x 8'10"
Third Bedroom	3.85m x 3.00m	12'6" x 9'8"
Total Area	115 sq m	1237 sq ft
• including wardrobes		

Any sizes and dimensions provided are for indicative guidance purposes only and are not intended to be used for items of furniture. Bathroom, kitchen and wardrobe layouts are indicative only and are subject to change. Apartment areas are provided as gross internal areas and may vary.